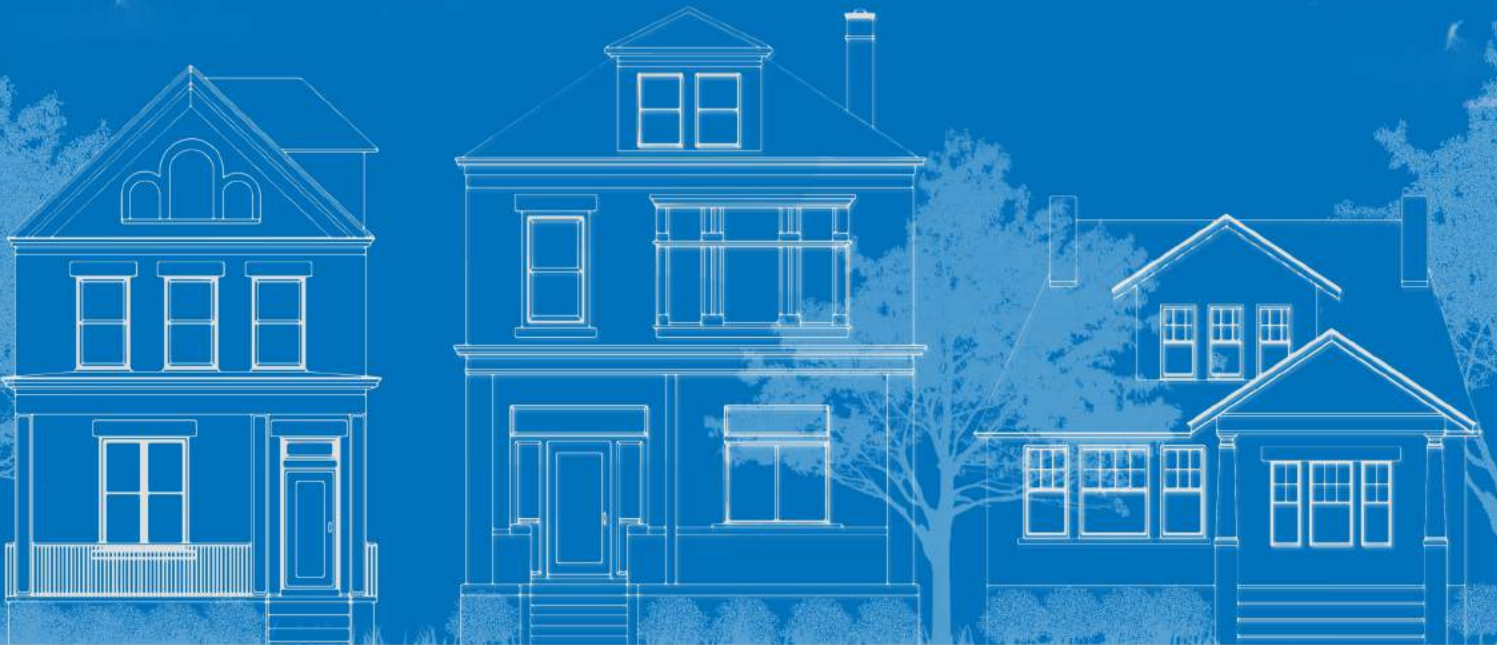


# HOMEWOOD

## Architectural Style Guide





---

# **HOMEWOOD**

---

**Architectural Style Guide**



# Homewood

## Architectural Style Guide

---

2016

Sponsors:

Operation Better Block  
Neighborhood Allies  
Carnegie Mellon University



**Carnegie  
Mellon  
University**

**NEIGHBORHOOD ALLIES**

To the residents of Homewood, thank you for your continued enthusiasm and support. Your engagement and vision for community development allowed us to prepare this resource in hopes that future improvements to your community will be strategized and implemented.

Prepared for the residents of Homewood

By

Alexis Hayes

Leader In Training Fellow, Carnegie Mellon University

Intern, Neighborhood Allies

# Table of Contents:

---

A. Neighborhood Patterns	10
B. Architectural Patterns	14
Detailed Housing Styles	
1. American Foursquare	18
2. Rowhouse	28
3. Classic Cottage	38
4. Craftsmans Bungalow	48
5. Front Gable	58
6. Dutch Colonial Revival	68





# How to use this style guide:

In order to thoroughly understand the patterns found throughout Homewood, this book is broken down into 2 components: A and B.



## **Neighborhood Patterns**

Part A analyzes the areas studied for creating this resource. Providing a graphic representation of designated walking areas throughout the Homewood community. Highlighted neighborhood amenities that acted as key factors in determining these study areas such as churches, schools, bus stops, the bus way and main access points for those commuting. Lastly, identifying areas of concentrated architectural styles through the neighborhood.

This section should be used to determine the strengths and weaknesses of the community and identify areas best suited for development.



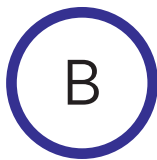
Areas of Concentrated Styles



Neighborhood Amenities



Areas Studied



## **Architectural Patterns**

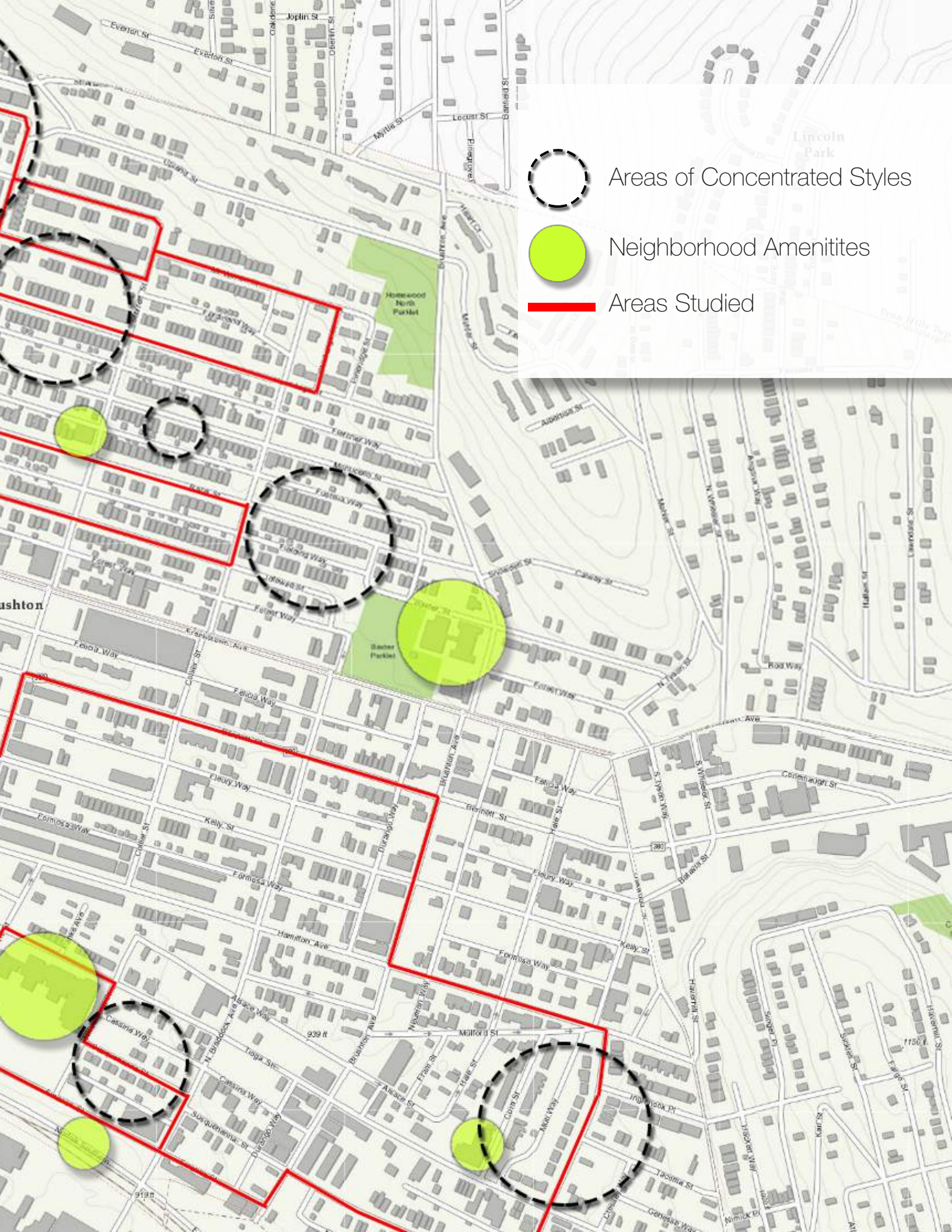
Part B presents the common architectural styles found throughout Homewood. With style descriptions and illustrations developers can reference this section to determine proper design choices for Homewood that will help to strengthen its identity. Not only does it identify common traditional styles, but it also discusses those unique to Homewood and the greater region of Pittsburgh.



# Neighborhood Patterns

---





Areas of Concentrated Styles



Neighborhood Amenities



Areas Studied

Lincoln Park

Hollywood North Parklet

Barker Parklet

ushton

939 ft



# Architectural Patterns

---

# Overview Existing Housing Styles :

Each neighborhood has common architectural styles that contribute to the uniqueness of its pattern. There are six architectural styles of residential single-family homes most prominently found throughout Homewood. Below are descriptions of some building design elements explored for each style:

**Building Composition:** Front and side elevations commonly found throughout Homewood.

**Windows and Doors:** Examples of common windows and doors used on styles with a proportional description.

**Massing:** An example of the most common arrangement of each architectural style.

**Materiality:** Common materials often used throughout the neighborhood.

American  
Foursquare:



Rowhouse:



Classic  
Cottage:



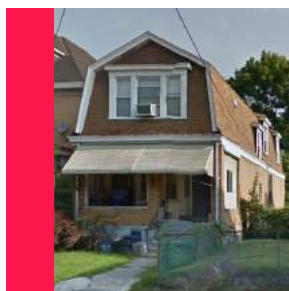
Craftsman  
Bungalow:



Gable  
Front:



Dutch Colonial  
Revival:



# American Foursquare



**American  
Foursquare 2**

**American  
Foursquare 3**

Also known as “Prairie Box”, usually follows a four room floor plan, can sometimes be combined with elements of other styles to improve exterior esthetics. Was popular in 1890 (when it began) until about 1930. Usually has a full basement. The elevation is usually symmetrical, center front door and equally spaced windows. If the door is off center then the upstairs windows still usually follow a symmetrical pattern.

## **Common Features:**

**Massing:** Simple box shape, Two-and-a-half stories high with a full-width (or wrap around) porch and simple columns that support the roof.

**Roof:** Pyramid- Shaped Roof, low hipped, deep over hangs.

**Window:** Large central dormers, double hung. Windows are typically vertically positioned. Special windows are typically paired or grouped.

**Doors:** Typically a single door. Sometimes found with sidelight windows or a transom.

**Walls:** Brick, stone, stucco, concrete block, and wood siding.



**American  
Foursquare 1**

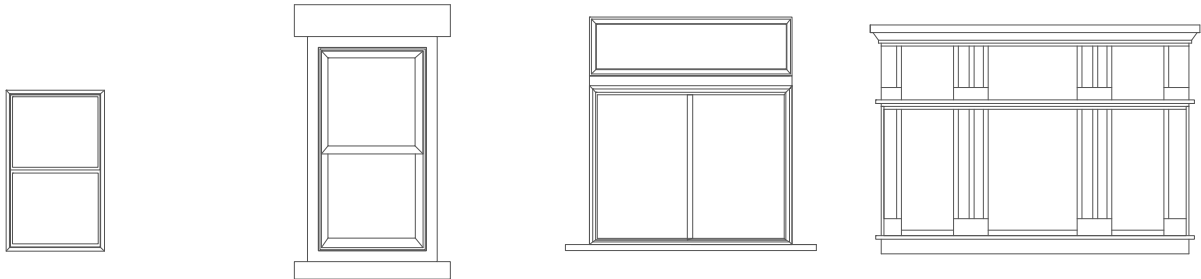
# Building Composition:

American Foursquare 1



# Windows & Doors:

## Common Windows



1-over-1  
Double  
Hung

1-over-1  
Double  
Hung

Fixed  
(Decorative)  
+ Slider

1-over-1  
Double  
Hung

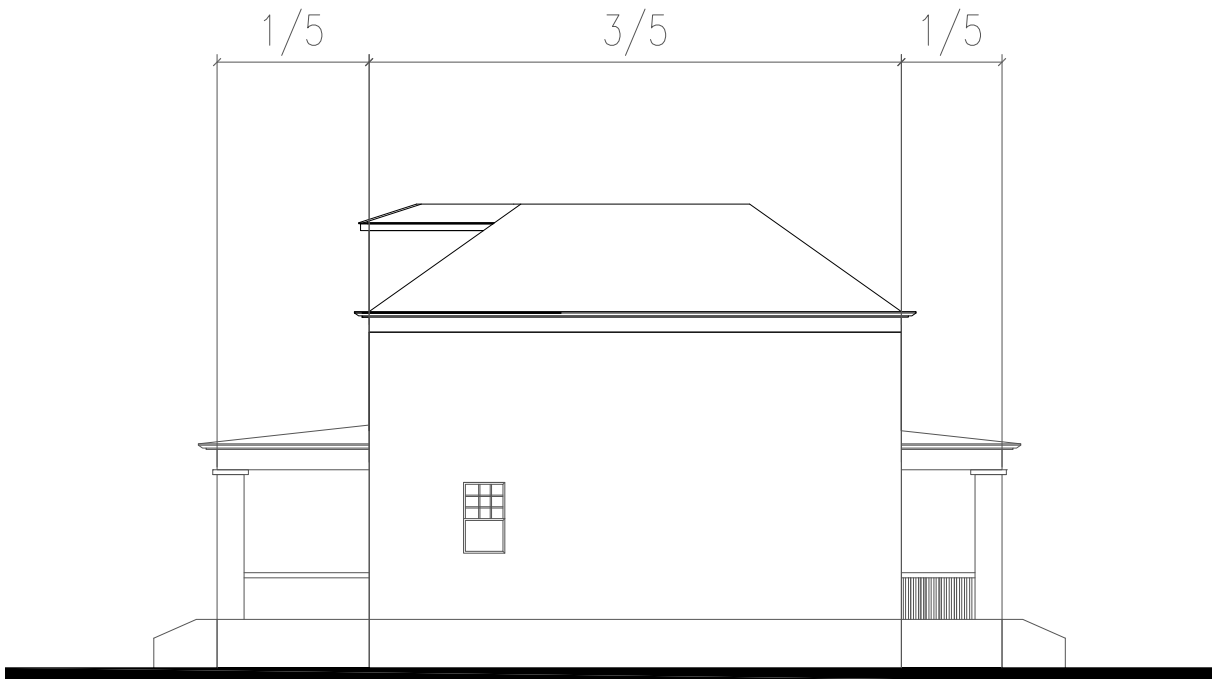
## Common Door



Glass Door with  
Glass Sidelight + Transom

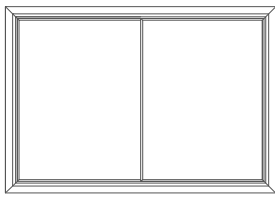
# Building Composition:

American Foursquare 2

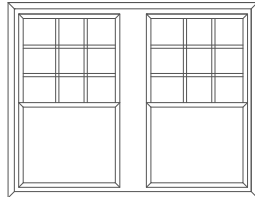


# Windows & Doors:

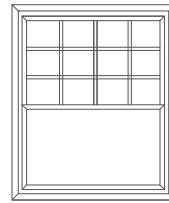
## Common Windows



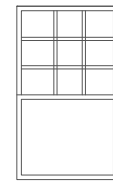
Horizontal  
Slider



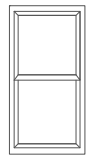
Paired 9-over-1  
Double  
Hung



12-over-1  
Double  
Hung

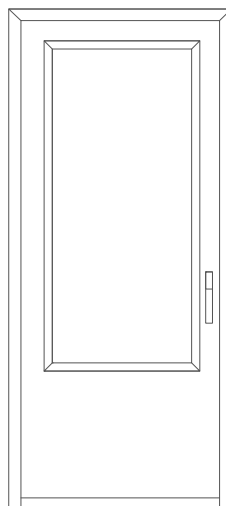


9-over-1  
Double  
Hung



1-over-1  
Double  
Hung

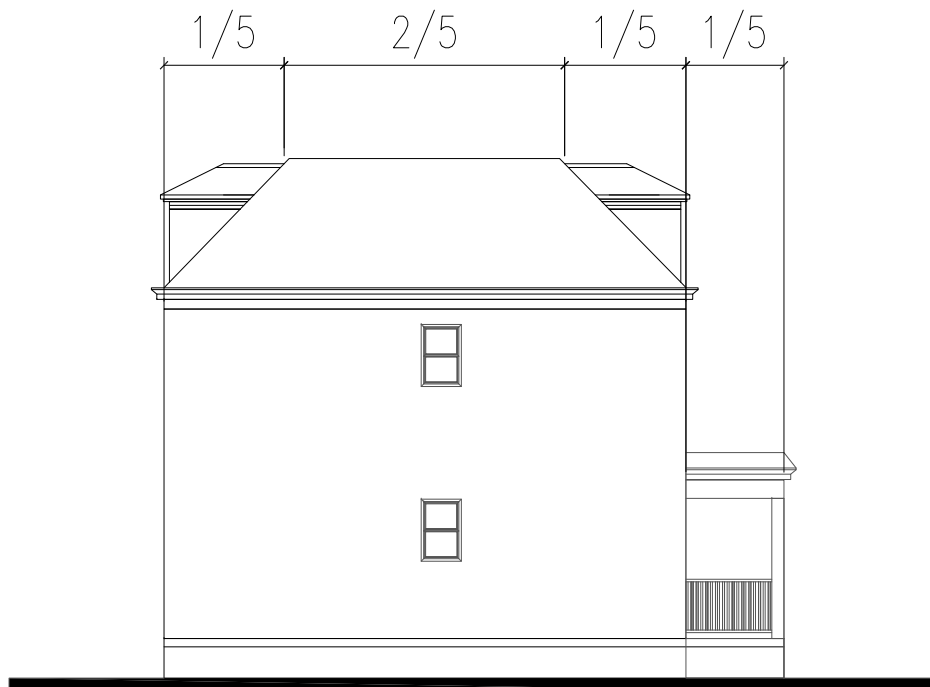
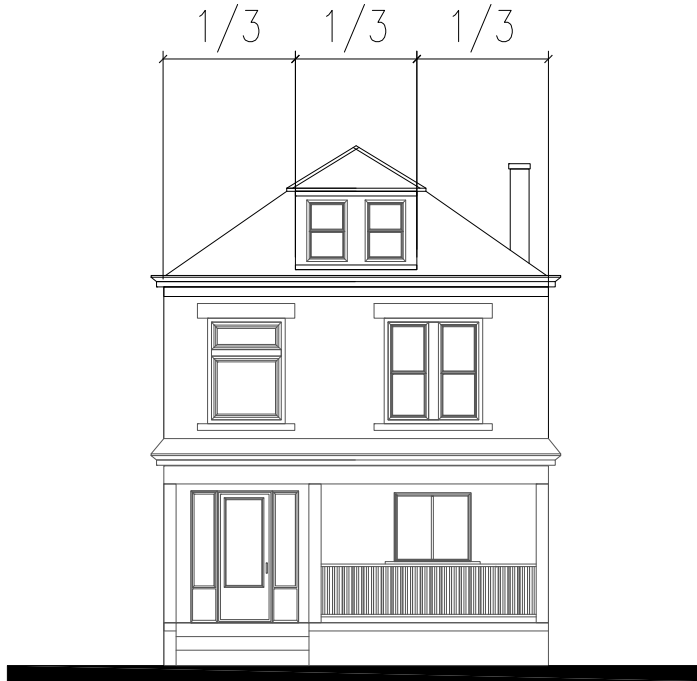
## Common Door



Half Glass Door

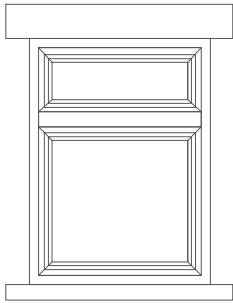
# Building Composition:

American Foursquare 3

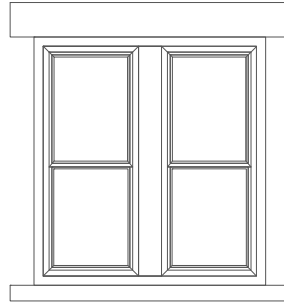


# Windows & Doors:

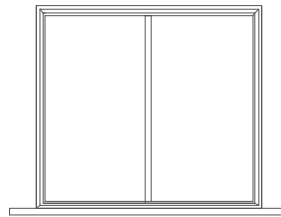
## Common Windows



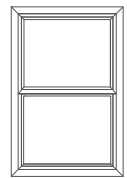
Fixed  
(Decorative)  
+ Picture



Paired 1-over-1  
Double  
Hung

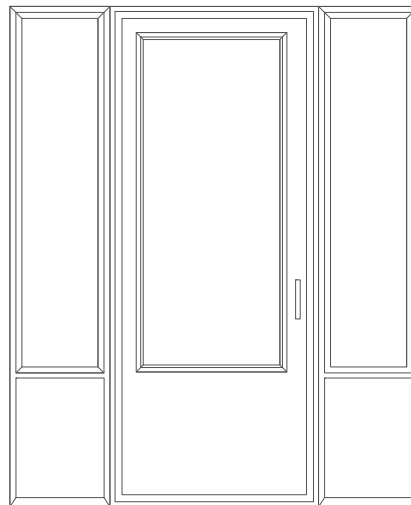


Horizontal  
Slider



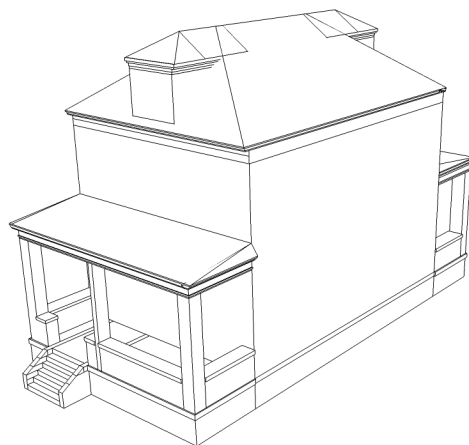
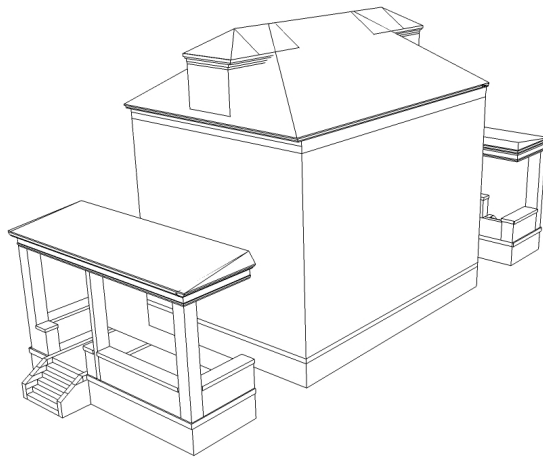
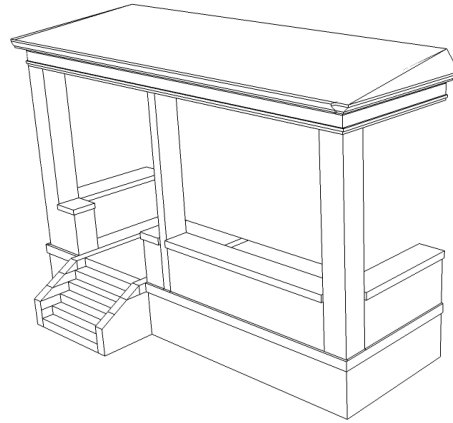
1-over-1  
Double  
Hung

## Common Door



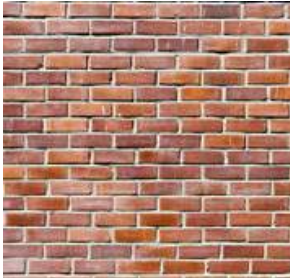
Half Glass Door +  
Glass Sidelight

# Massing:



# Materiality:

## Most Common in Neighborhood



Brown Brick  
(Exterior)



Red Brick  
(Exterior)



Stucco  
(Exterior)



CMU  
(Exterior)

## Alternative

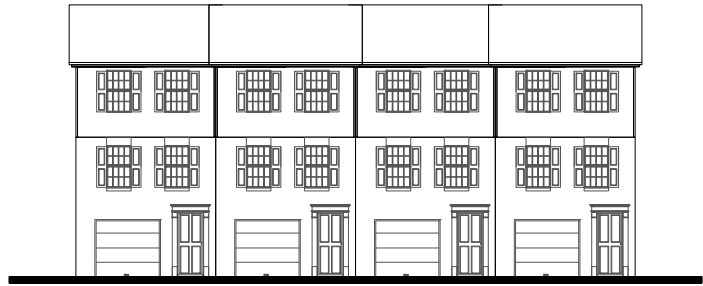


White Vinyl  
(Exterior)



Medium Vinyl  
(Exterior)

# Rowhouse



**Rowhouse 2**



**Rowhouse 3**

The Rowhouse steadily gained popularity throughout the 1800's. It's usually two to four stories high, with narrow interiors and basements. The overall rectangular shape adapts to the elaborate and ornamental features of Colonial Revival and Italianate styles.

## **Common Features:**

**Massing:** Long rectangular shape divided into narrow units that share interior walls.

**Roof:** Low sloped or parapet roof.

**Window:** Large double hung, one-over-one single hung, casement with heavy window sills and lintels

**Doors:** Deeply recessed doors with hood and front porch.

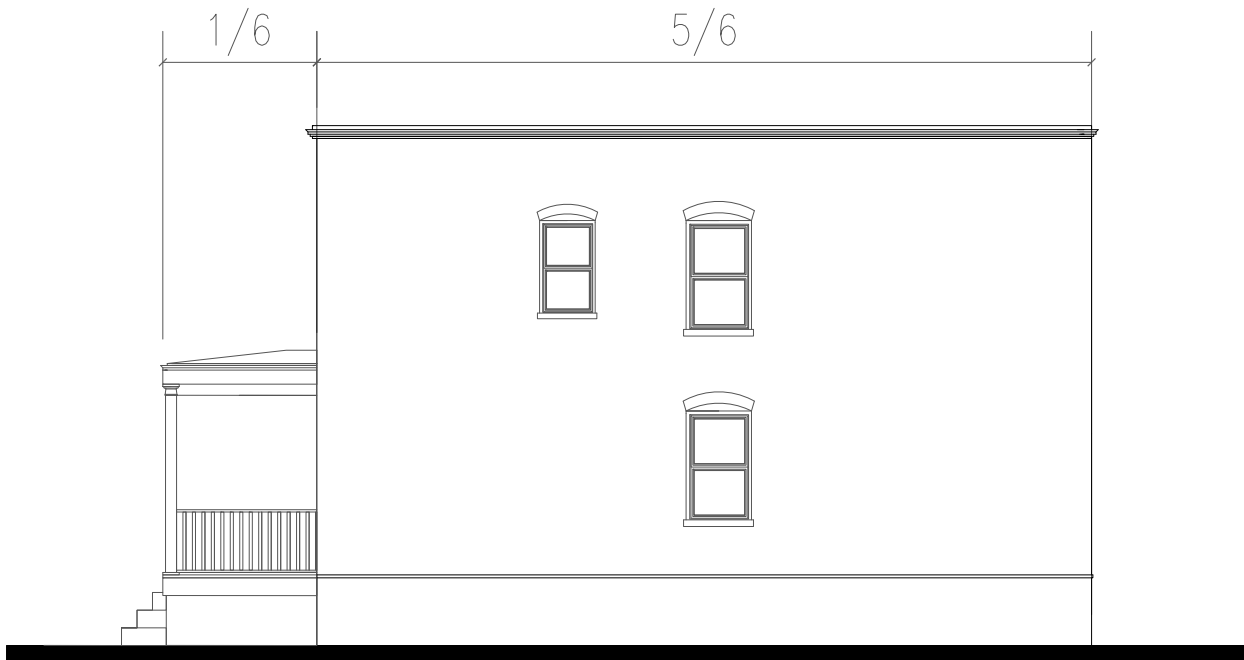
**Walls:** Brick, stone and vinyl.



**Rowhouse 1**

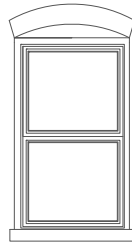
# Building Composition:

Rowhouse 1

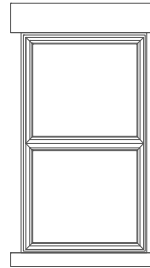


# Windows & Doors:

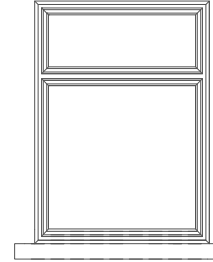
## Common Windows



1-over-1  
Double  
Hung

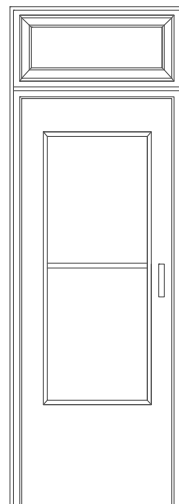


1-over-1  
Double  
Hung



Fixed  
(Decorative)  
+ Picture

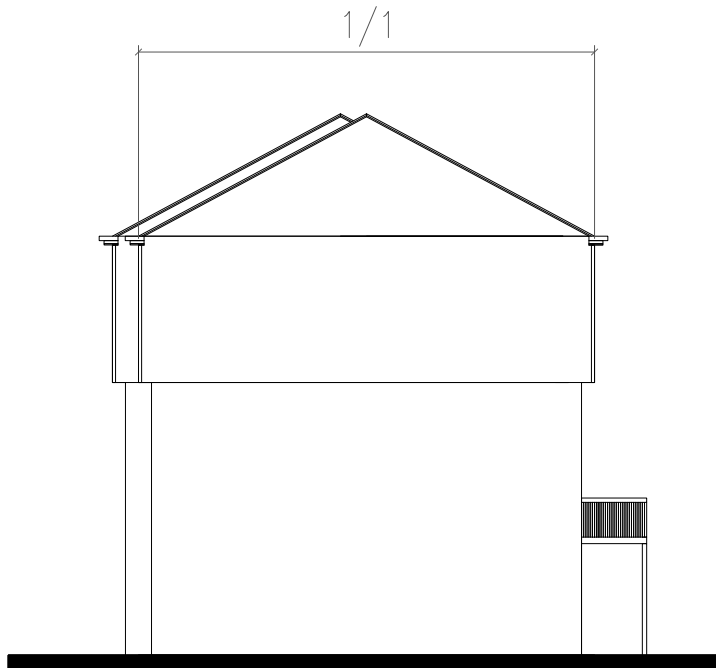
## Common Door



Half Glass & Glass Door  
+ Transom

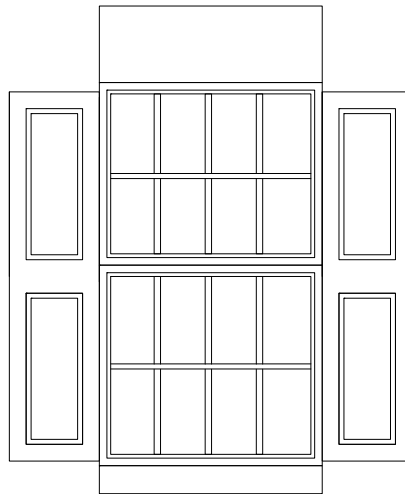
# Building Composition:

Rowhouse 2



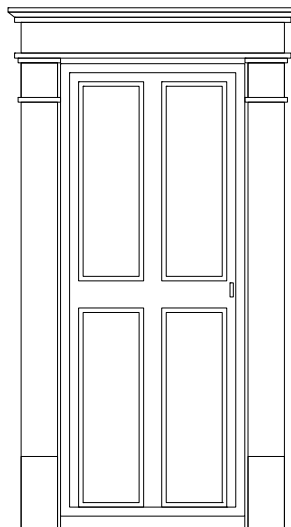
# Windows & Doors:

## Common Windows



8-over-8  
Double Hung  
with Shutters

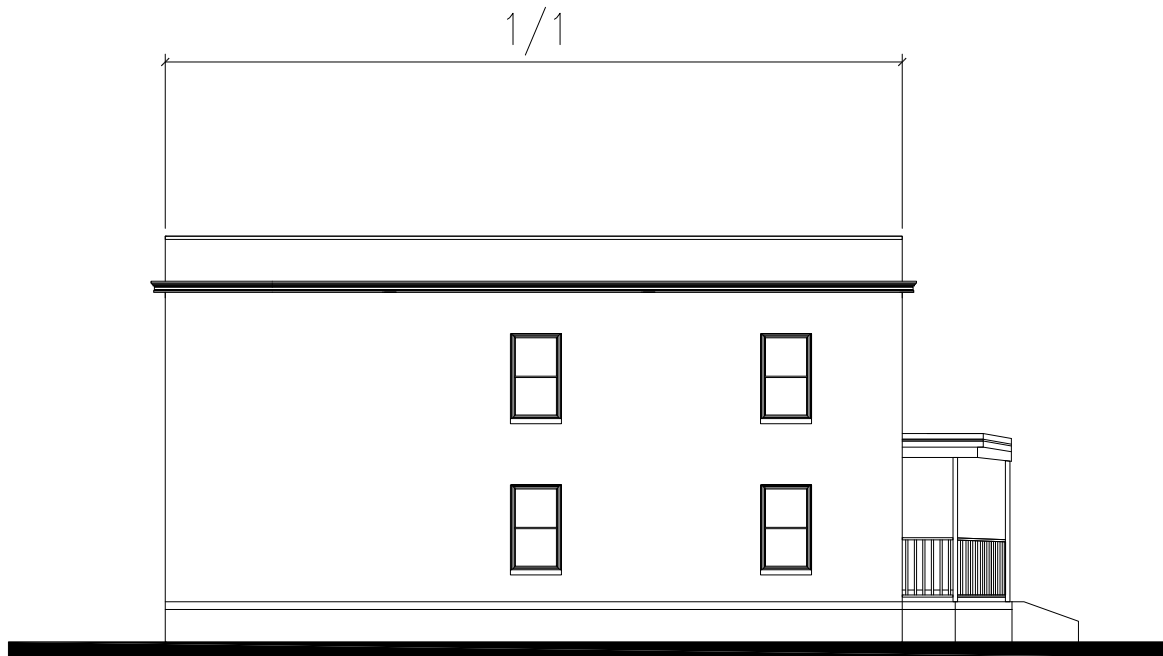
## Common Door



4 Panel Wood Door

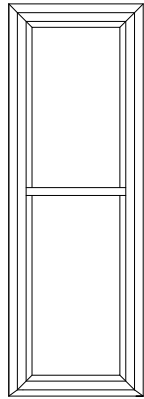
# Building Composition:

Rowhouse 3

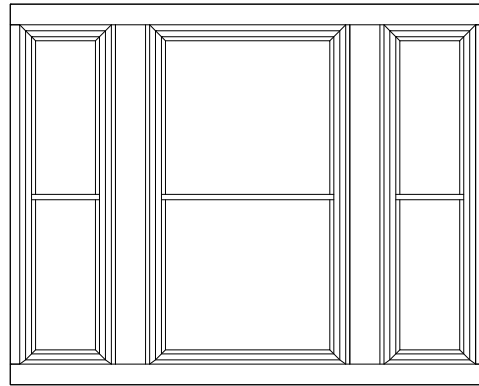


# Windows & Doors:

## Common Windows

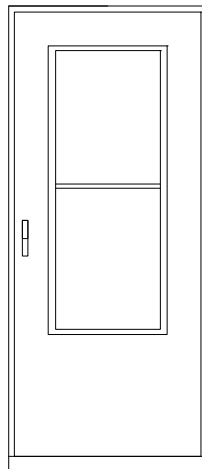


1-over-1  
Double  
Hung



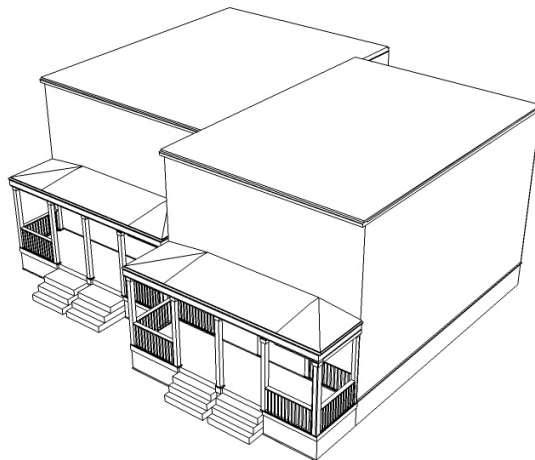
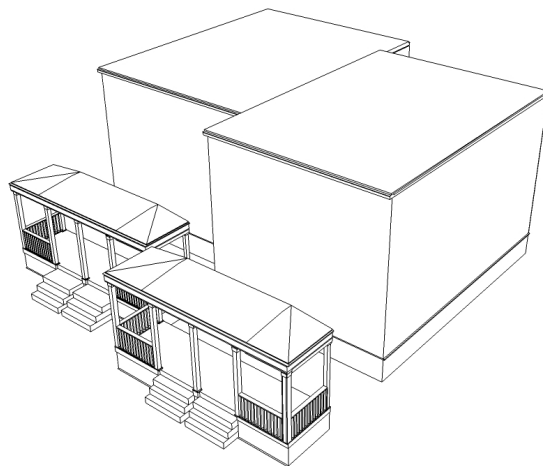
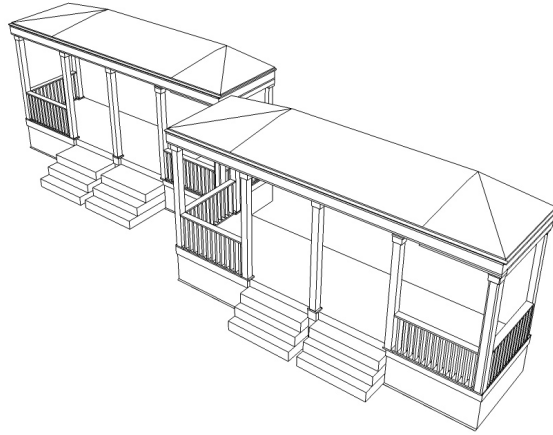
Grouped 1-over-1  
Double  
Hung

## Common Door



Half Glass & Glass Door

# Massing:

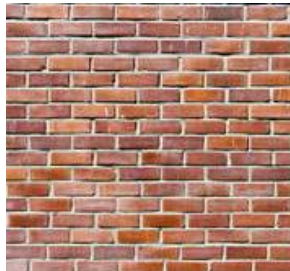


# Materiality:

## Most Common in Neighborhood



Red Brick  
(Exterior)



Brown Brick  
(Exterior)

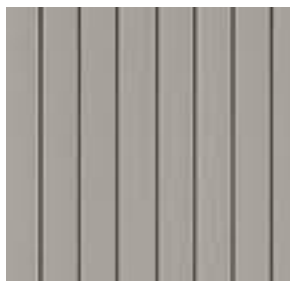


Light Brick  
(Exterior)



CMU  
(Exterior)

## Alternative

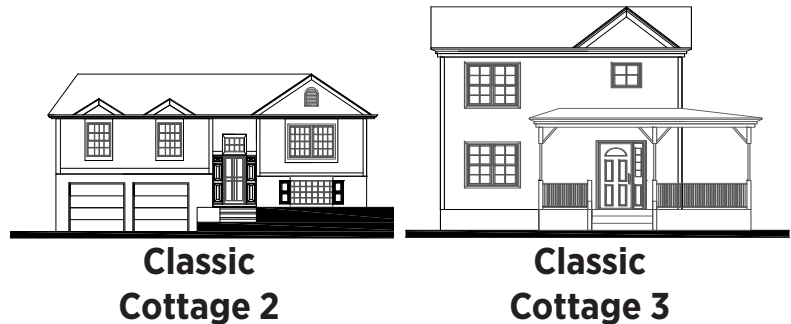


Vertical Vinyl  
(Exterior)



Stone  
(Exterior)

# Classic Cottage



The cottage-style home is one of the most popular housing types throughout Pittsburgh. Its modest style is borrowed from a blend of Gothic Revival and Folk Victorian influence. It was most popular in the United States during the 1920's and the 1930's.

## Common Features:

**Massing:** Usually two stories tall and two or three bays wide

**Roof:** Depending on the plan the roof can either be a front facing gable, side facing gable or mansard with a small centered gable, or in examples with an L-shaped plan, cross gable.

**Window:** Large windows, usually double hung, sliding and picture.

**Doors:** Usually large doors with wooden transoms separating them from upper glazing panels. Often doors are found at the end of bays.

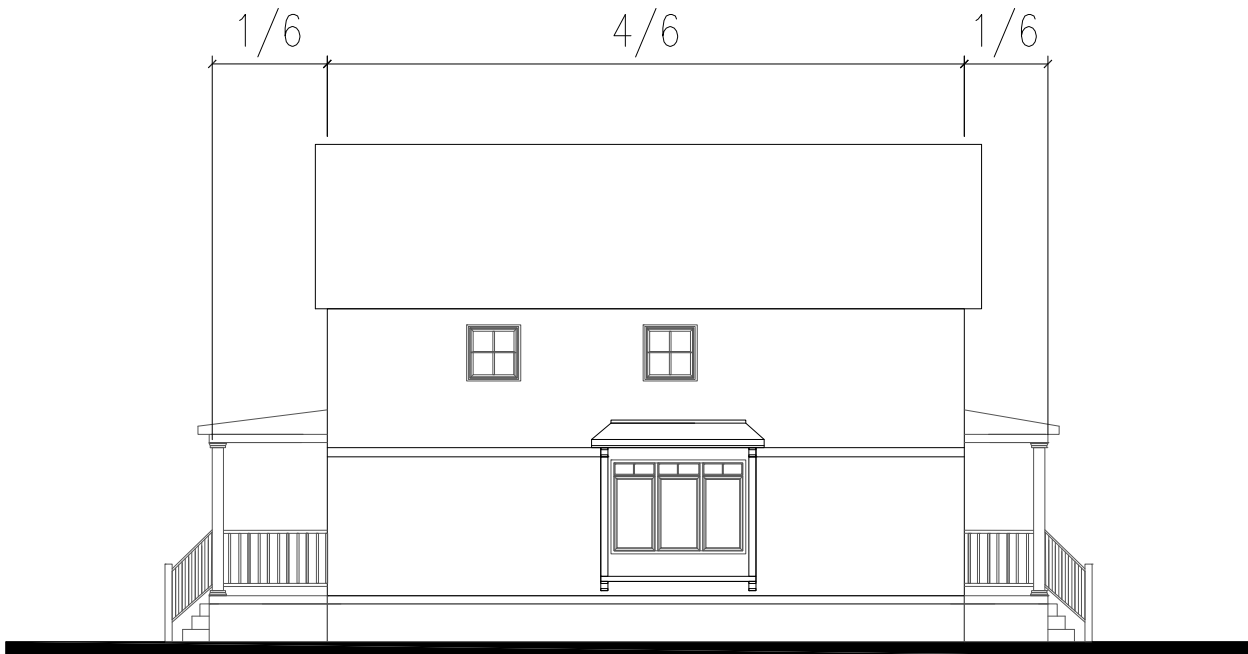
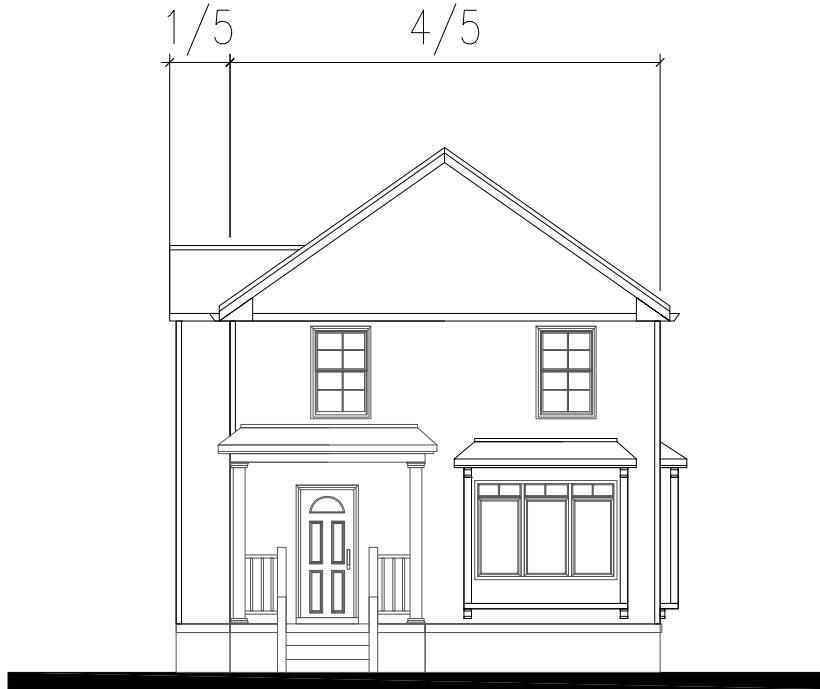
**Walls:** Most commonly known for its clapboard siding, however, shingles, or board-and-batten siding are sometimes used to apply a varied effect.



**Classic  
Cottage 1**

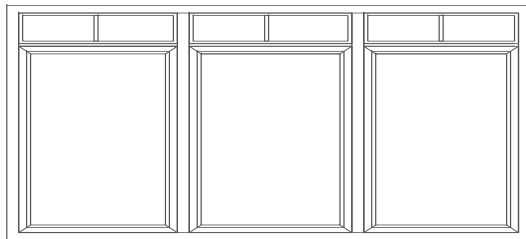
# Building Composition:

Classic Cottage 1

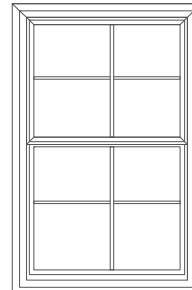


# Windows & Doors:

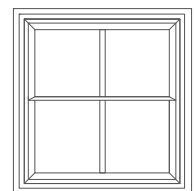
## Common Windows



Grouped Fixed  
(Decorative)  
+ Casement

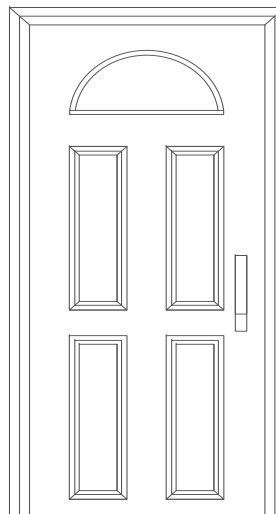


4-over-4  
Double  
Hung



4 Pane  
Fixed  
Picture

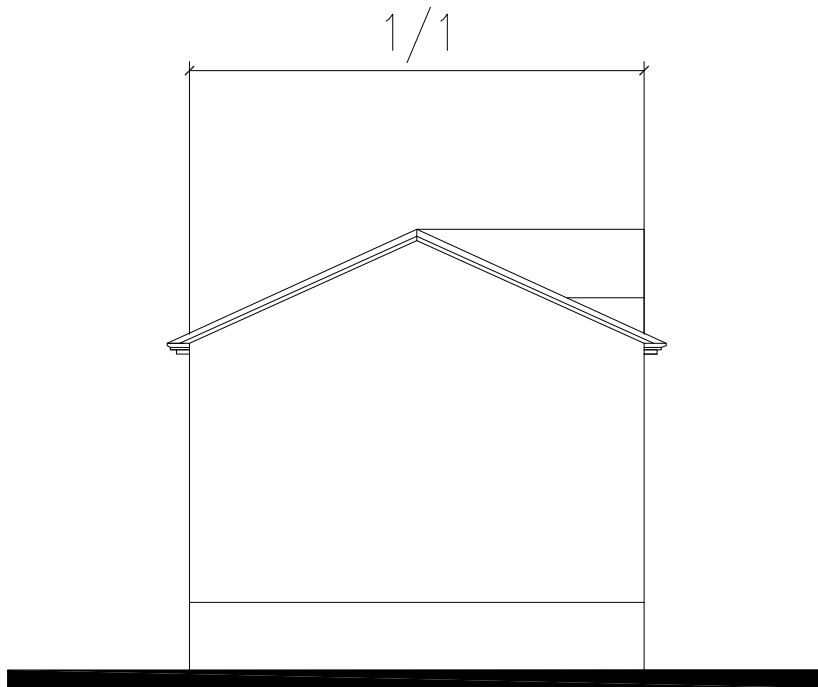
## Common Door



1/4 Glass Arch & 4 Panel Door

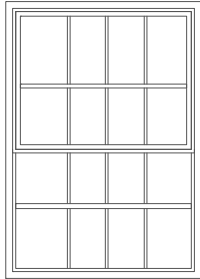
# Building Composition:

Classic Cottage 2

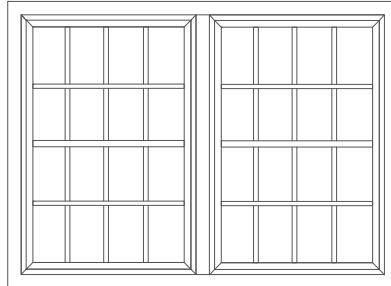


# Windows & Doors:

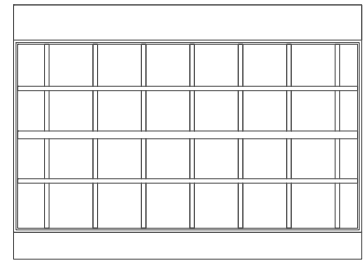
## Common Windows



8-over-8  
Double  
Hung

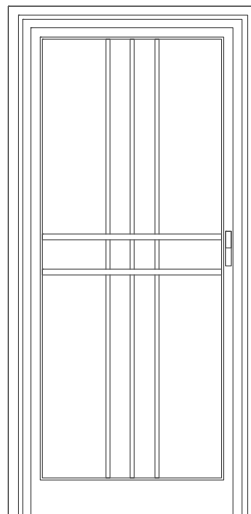


Paired 8-over-8  
Double  
Hung



8-over-8  
Horizontal  
Slider

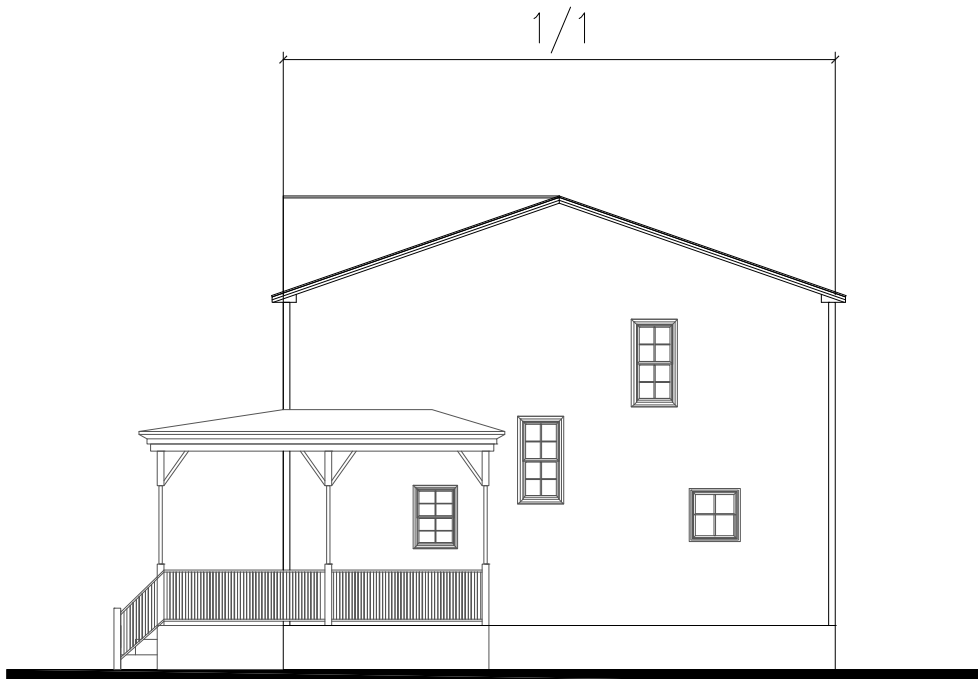
## Common Door



Full Glass + Iron Detail

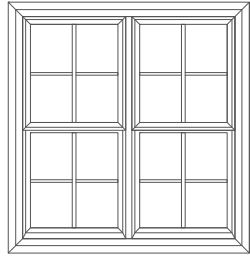
# Building Composition:

Classic Cottage 3

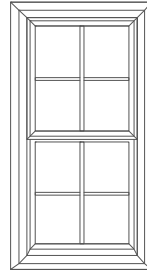


# Windows & Doors:

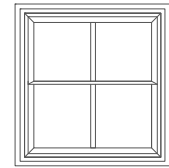
## Common Windows



Paired 4-over-4  
Double  
Hung

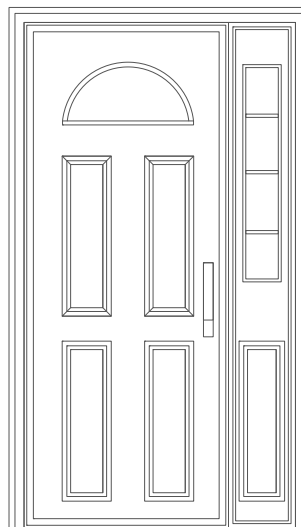


4-over-4  
Double  
Hung



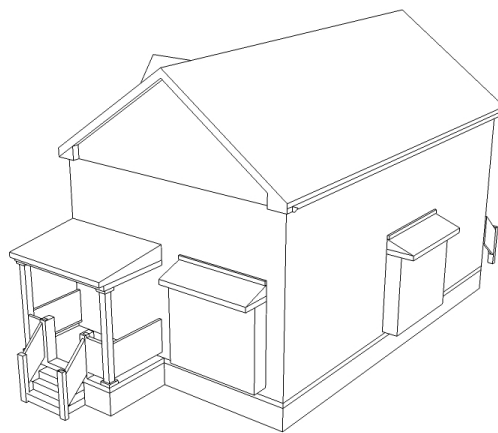
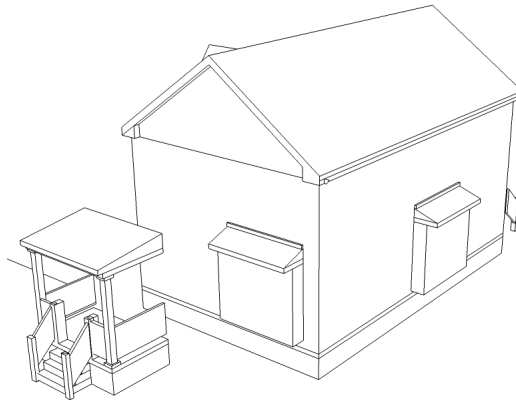
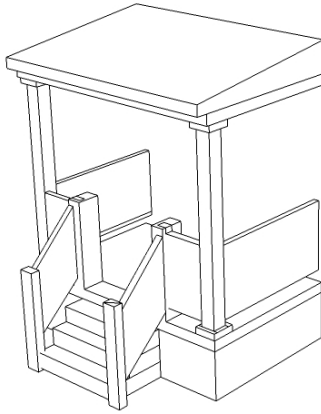
4 Pane  
Fixed  
Picture

## Common Door



4 Panel Wood Door with Glass  
+ Glass Sidelight

# Massing:

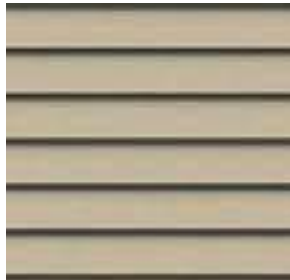


# Materiality:

## Most Common in Neighborhood



White Vinyl  
(Exterior)



Tan Vinyl  
(Exterior)



Multi Colored  
Vinyl  
(Exterior)



Vertical Vinyl  
(Exterior)

## Alternative

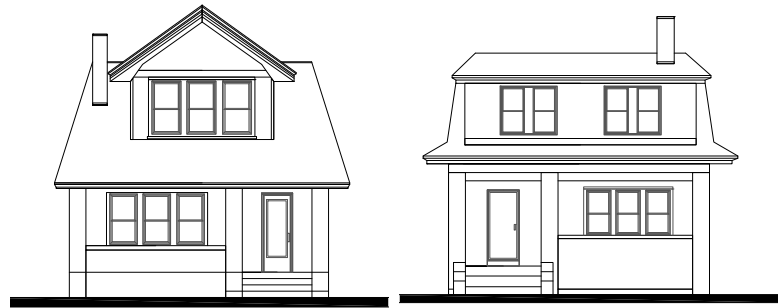


Stucco  
(Exterior)



Stone  
(Exterior)

# Craftsman Bungalow



**Craftsman Bungalow 2**

**Craftsman Bungalow 3**

The Craftsman Bungalow home is one of the most common house styles that emerged from the Arts & Crafts movement of the early 20th century. This bungalow variation first appeared in the early 1900s and remains popular today.

## **Common Features:**

**Massing:** One-and-a-half stories high. Usually with a full-width porch and elaborate columns that support the roof.

**Roof:** Shallow pitched roofs, gabled or hipped with deeply overhung eaves.

**Window:** Double hung and casement.

**Doors:** Typically a single door. Usually made of stained wood, never painted.

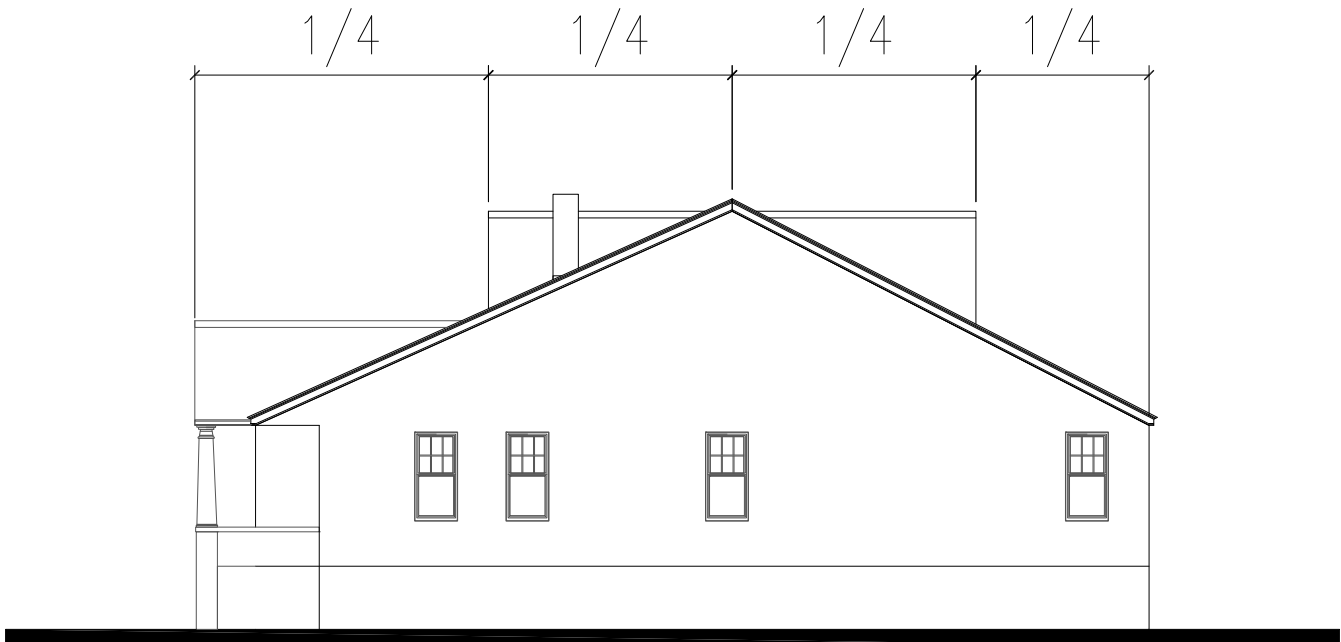
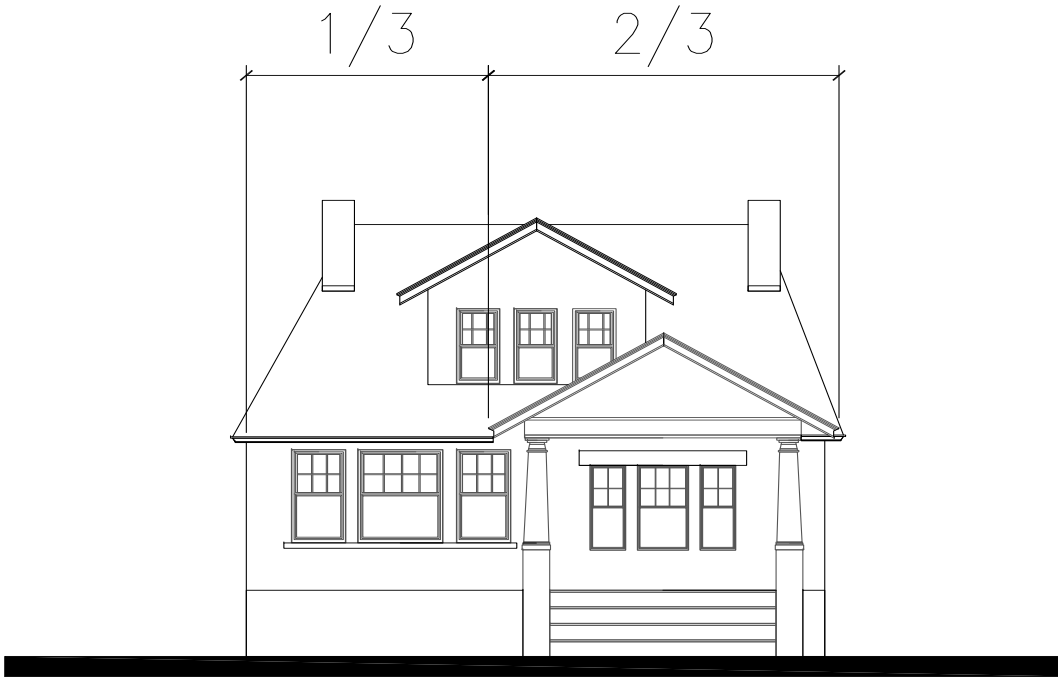
**Walls:** Brick, shingles, stone and vinyl siding.



**Craftsman  
Bungalow 1**

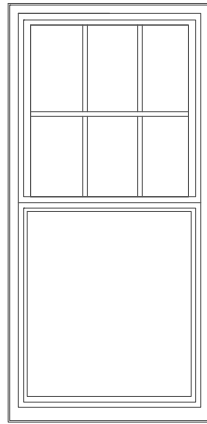
# Building Composition:

Craftmans Bungalow 1

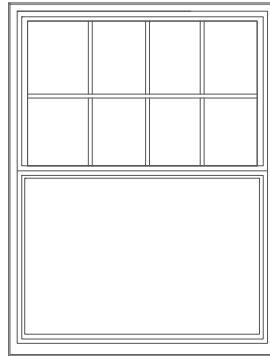


# Windows & Doors:

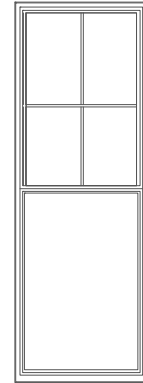
## Common Windows



6-over-1  
Double  
Hung

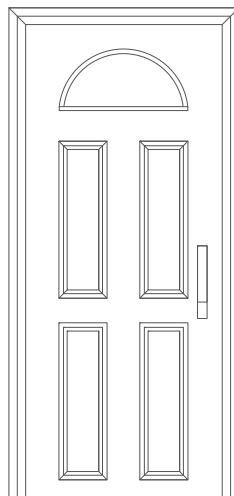


8-over-1  
Double  
Hung



4-over-1  
Double  
Hung

## Common Door



4 Panel Wood Door with Glass  
+ Glass Sidelight

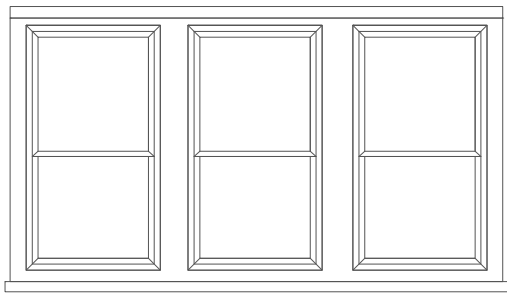
# Building Composition:

Craftsmans Bungalow 2



# Windows & Doors:

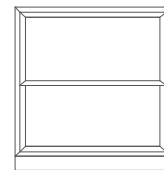
## Common Windows



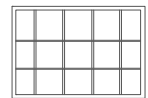
Grouped 1-over-1  
Double  
Hung



1-over-1  
Double  
Hung

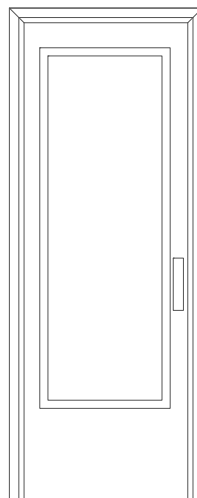


1-over-1  
Double  
Hung



Glass  
Block

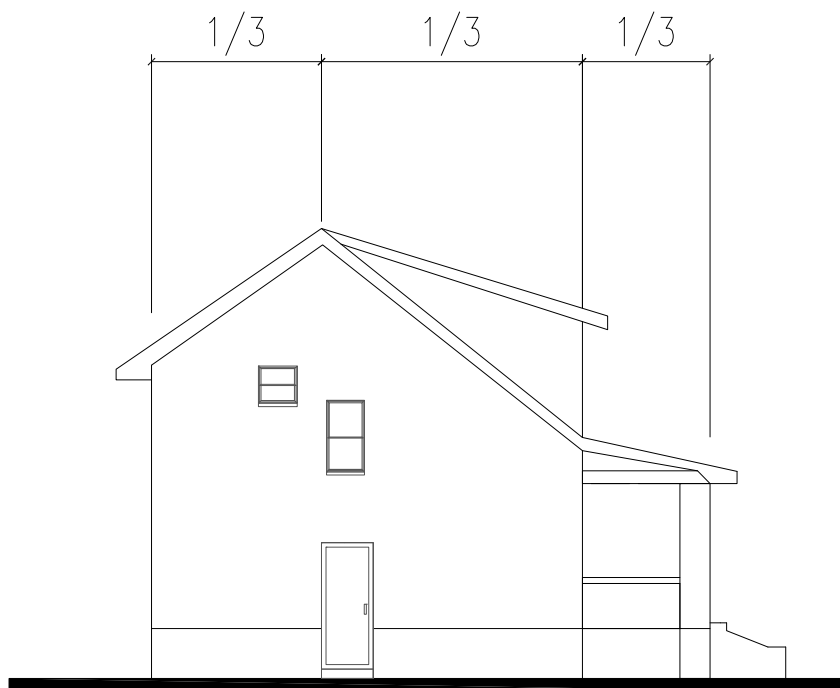
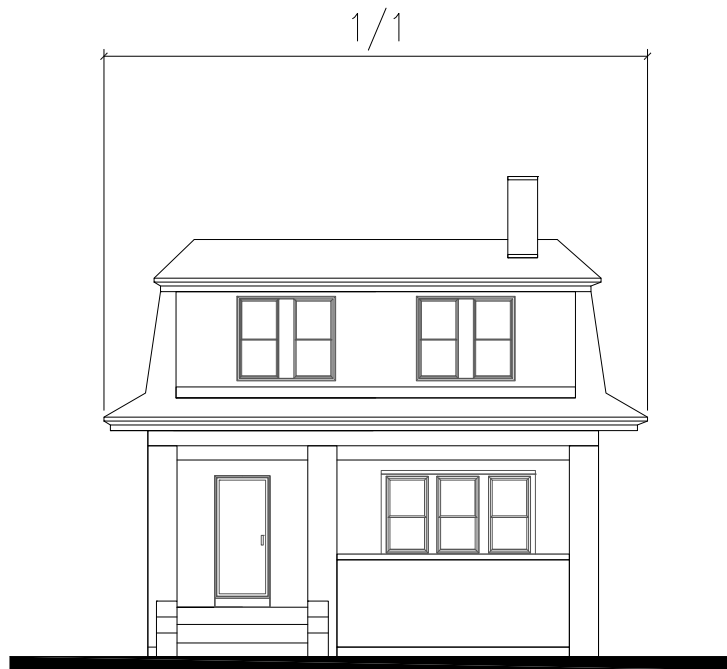
## Common Door



Glass Door

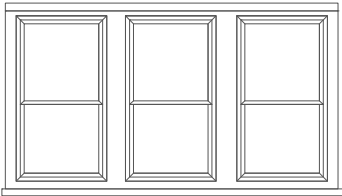
# Building Composition:

Craftsmans Bungalow 2

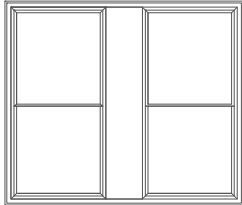


# Windows & Doors:

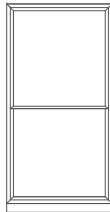
## Common Windows



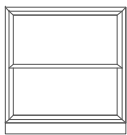
Group 1-over-1  
Double  
Hung



Paired 1-over-1  
Double  
Hung

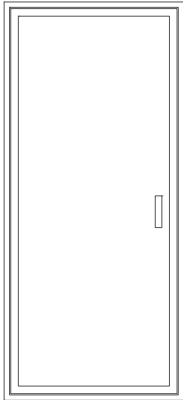


1-over-1  
Double  
Hung

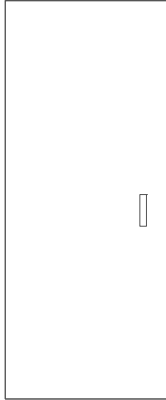


1-over-1  
Double  
Hung

## Common Door

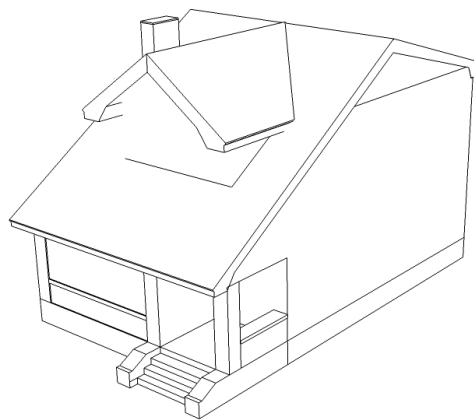
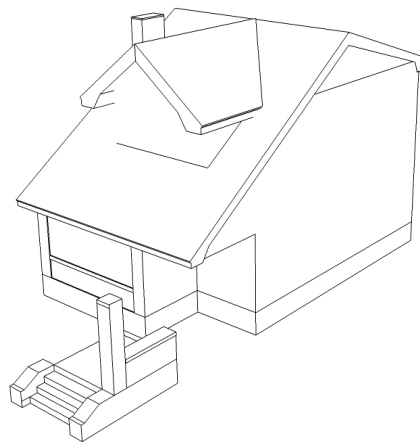
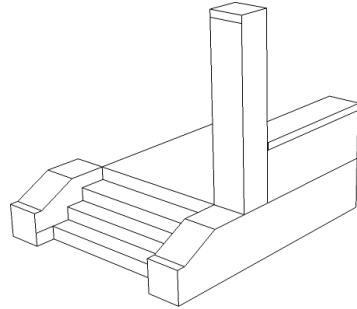


Glass  
Door



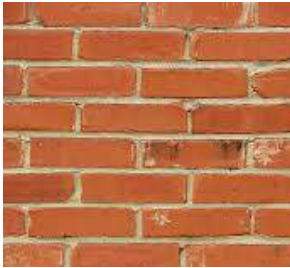
Flush  
Door

# Massing:



# Materiality:

## Most Common in Neighborhood



Red Brick  
(Exterior)



Stone  
(Exterior)

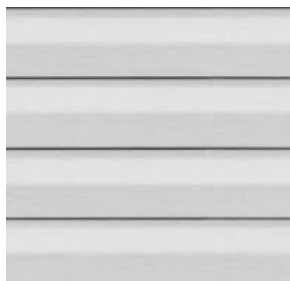


Stucco  
(Exterior)

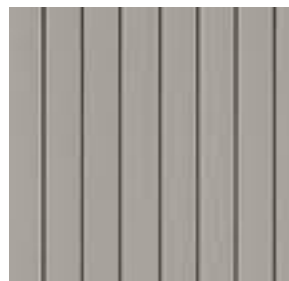


Shingle  
(Exterior)

## Alternative

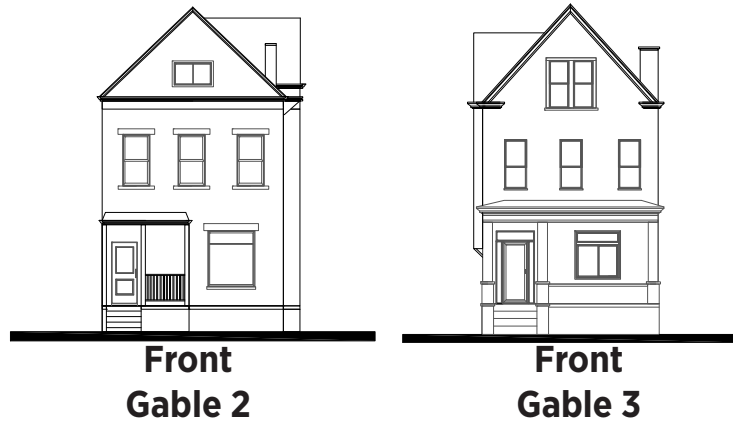


White Vinyl  
(Exterior)



Vertical Vinyl  
(Exterior)

# Front Gable



Also known as “Folk Victorian”, this style was popular from 1870 (when it began) until about 1910. The front gable elevation allows for the narrow parts of the house to face the street, usually placed on a rectangular lot.

## Common Features:

**Massing:** Simple rectangle shape, Three stories high with a porch and simple columns that support the roof.

**Roof:** Gable-Shaped Roof, slight overhangs.

**Window:** Large central window, double hung. Windows are typically vertically positioned. Special windows are typically paired or grouped.

**Doors:** Typically a single door. Sometimes found with sidelight windows or a transom.

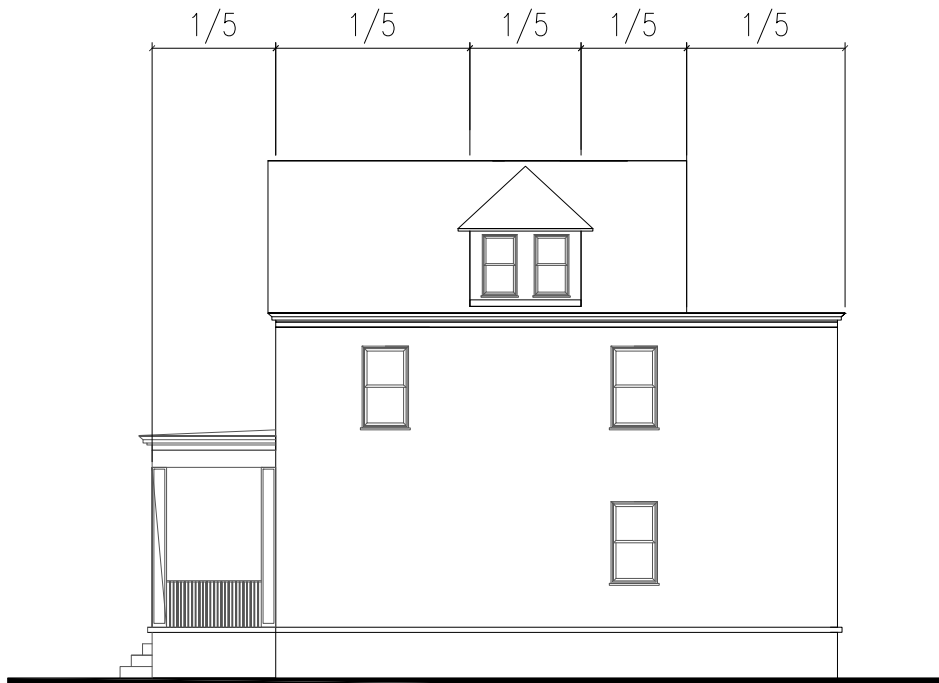
**Walls:** Brick, vinyl, stucco, stone.



**Front  
Gable 1**

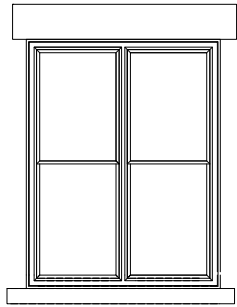
# Building Composition:

Front Gable 1

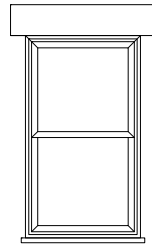


# Windows & Doors:

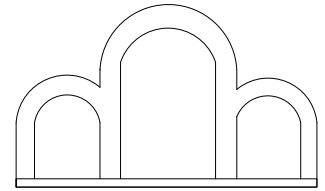
## Common Windows



Paired 1-over-1  
Double  
Hung

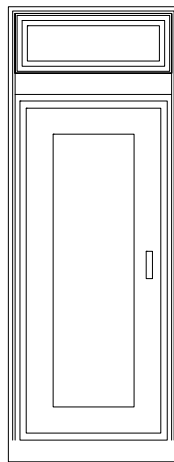


1-over-1  
Double  
Hung



Grouped Fixed  
(Decorative)

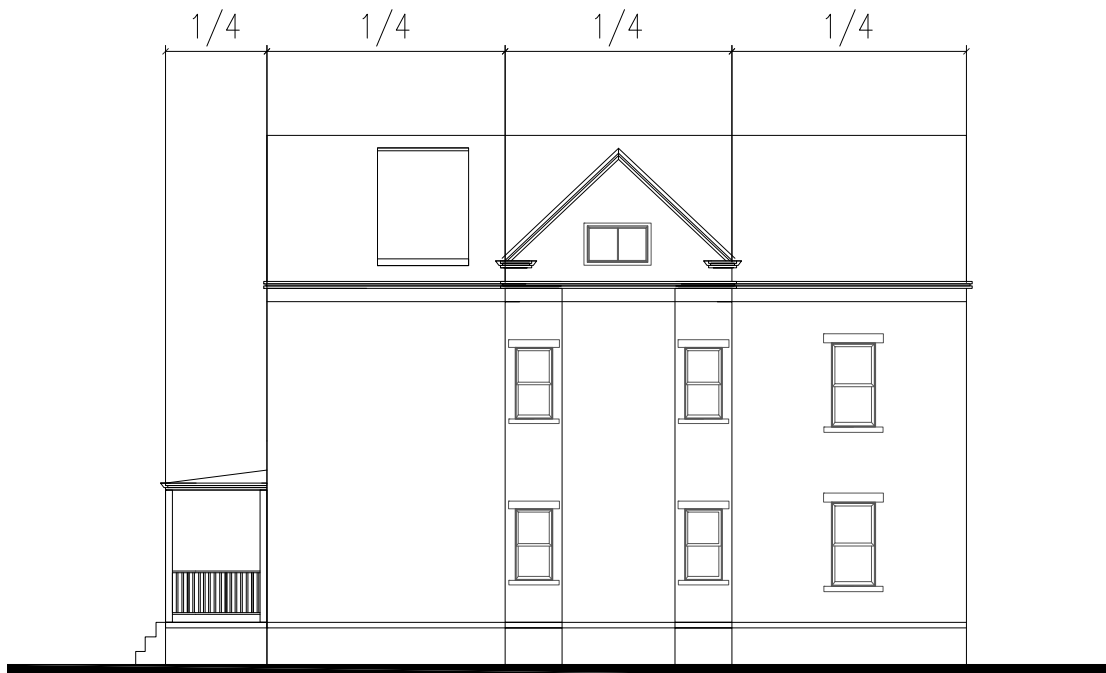
## Common Door



Glass Door + Transom

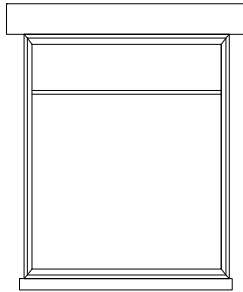
# Building Composition:

Front Gable 2

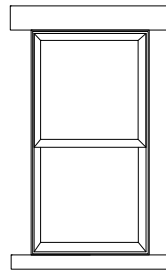


# Windows & Doors:

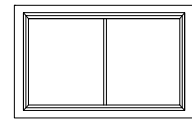
## Common Windows



Fixed  
(Decorative)  
+ Casement

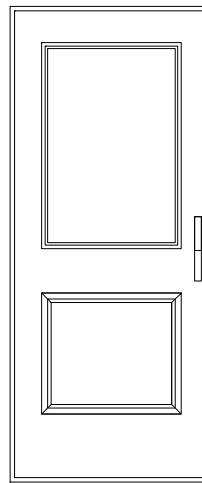


1-over-1  
Double  
Hung



1-over-1  
Horizontal  
Slider

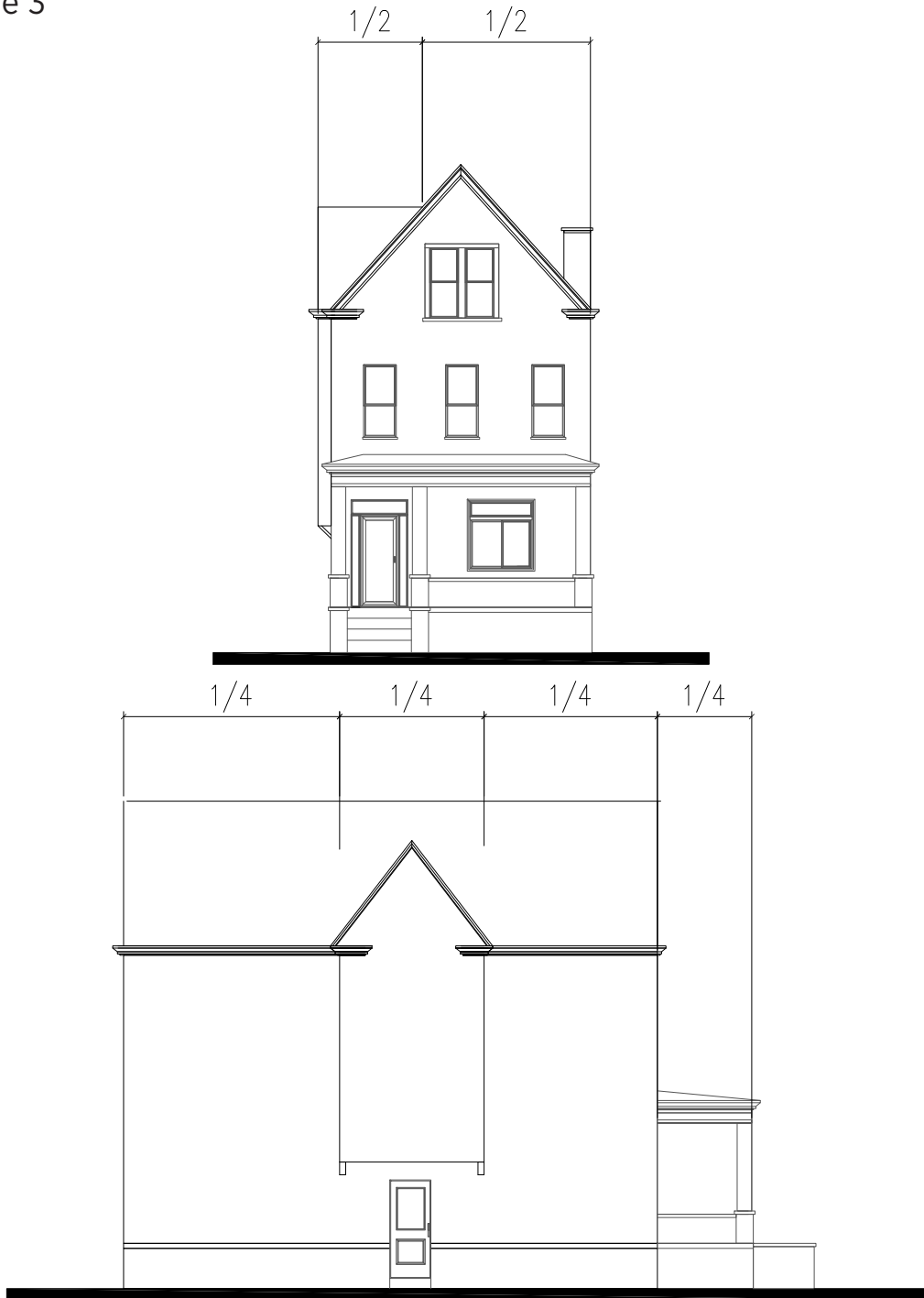
## Common Door



1 Panel and Half Glass  
Wood Door

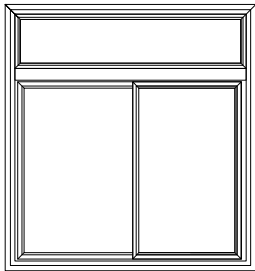
# Building Composition:

Front Gable 3

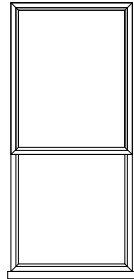


# Windows & Doors:

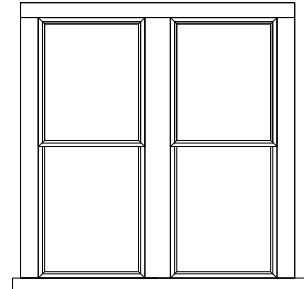
## Common Windows



Horizontal  
Slider  
+ Transom

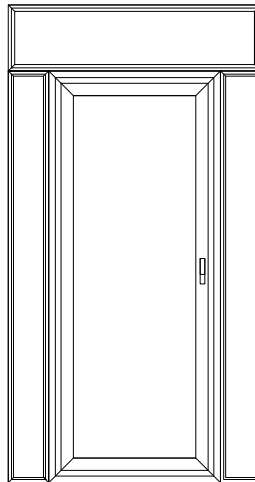


1-over-1  
Double  
Hung



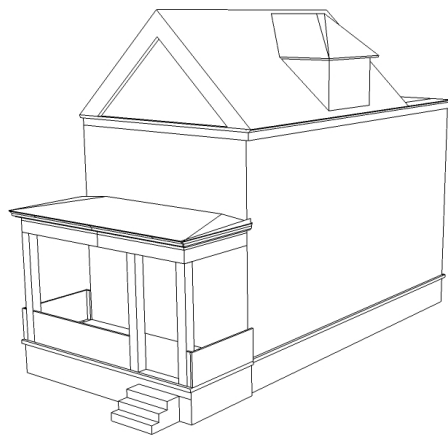
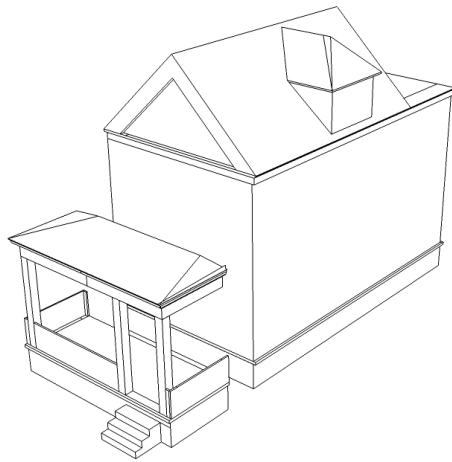
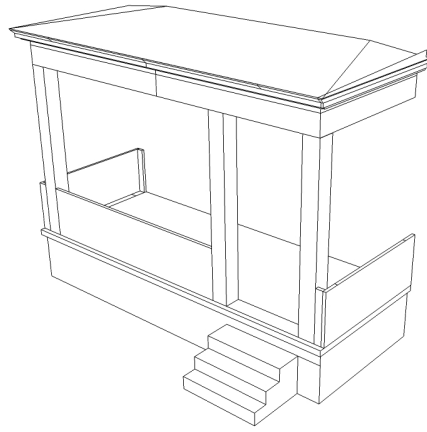
Paired 1-over-1  
Double  
Hung

## Common Door



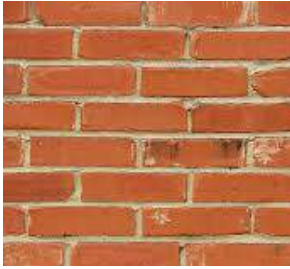
Glass Door + Glass Sidelight  
and Transom

# Massing:



# Materiality:

## Most Common in Neighborhood



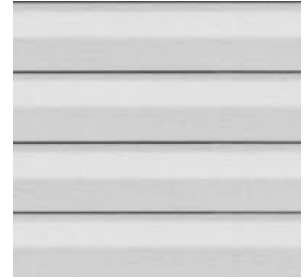
Red Brick  
(Exterior)



Stone  
(Exterior)



Stucco  
(Exterior)

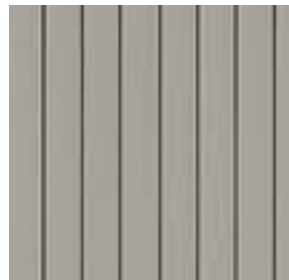


White Vinyl  
(Exterior)

## Alternative



Shingle  
(Exterior)



Vertical Vinyl  
(Exterior)

## Dutch Colonial Revival



**Dutch Colonial Revival 2**



**Dutch Colonial Revival 3**

Popular in 1890 (when it began) until about 1930. The gambrel roof allows for an almost complete second floor without the cost of two story construction. Distinguished by its roof, with or without eaves and typically asymmetrical in elevation.

### **Common Features:**

**Massing:** One and-a-half stories high with a porch placed under the roofs overhanging eaves.

**Roof:** Front facing gambrel usually with dormers.

**Window:** Grouped and paired window arrangements. Windows are typically vertically positioned.

**Doors:** Usually a single door. Sometimes with sidelight windows or a transom.

**Walls:** Shingle siding, brick, stone.



**Dutch Colonial  
Revival 1**

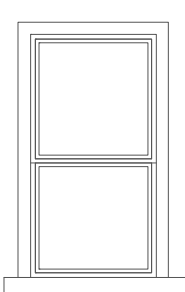
# Building Composition:

Dutch Colonial Revival 1

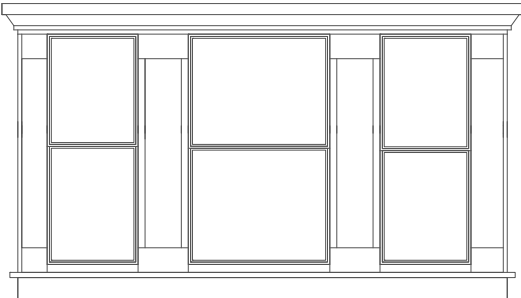


# Windows & Doors:

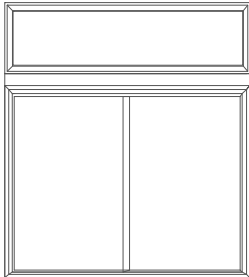
## Common Windows



1-over-1  
Double  
Hung

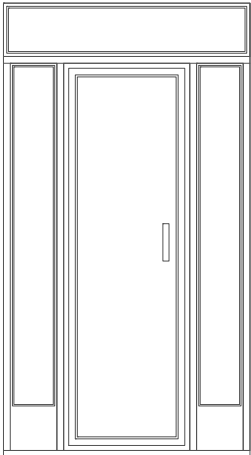


Grouped 1-over-1  
Double  
Hung

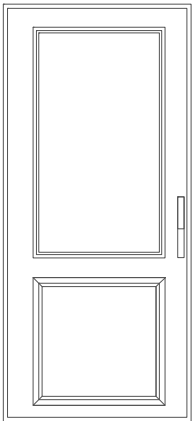


Fixed +  
Horizontal  
Slider

## Common Door



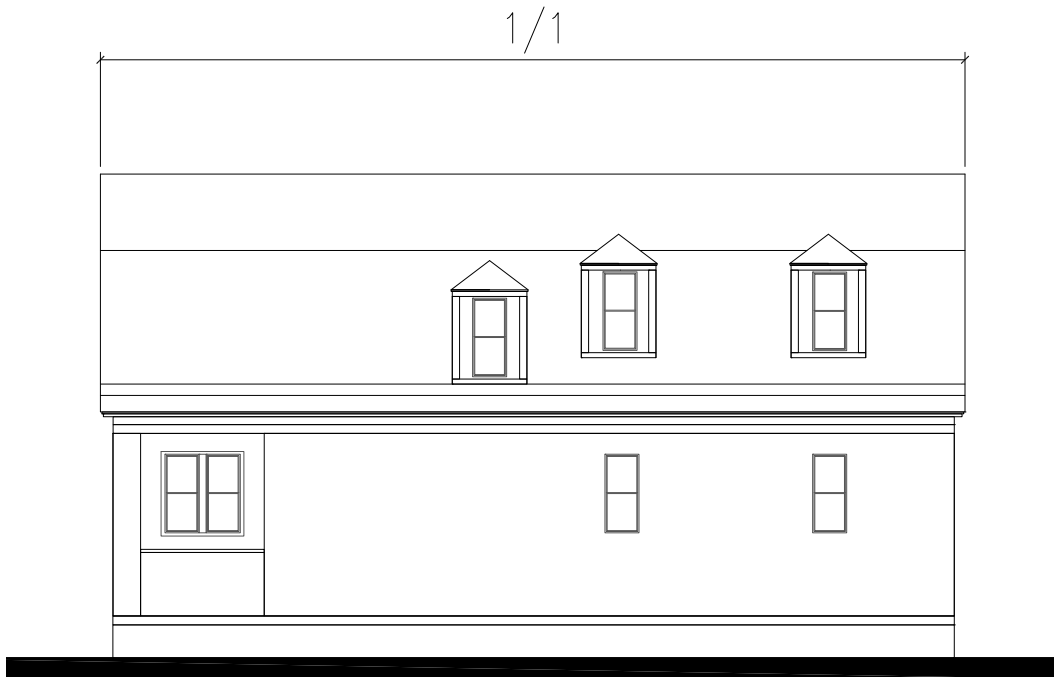
Glass Door +  
Transom with  
Sidelight



Half Glass +  
1 Panel Door

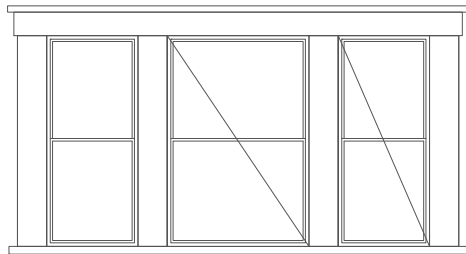
# Building Composition:

Dutch Colonial Revival 2

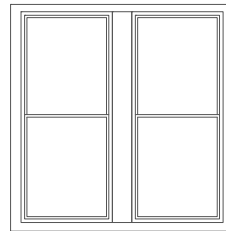


# Windows & Doors:

## Common Windows



Grouped 1-over-1  
Double  
Hung

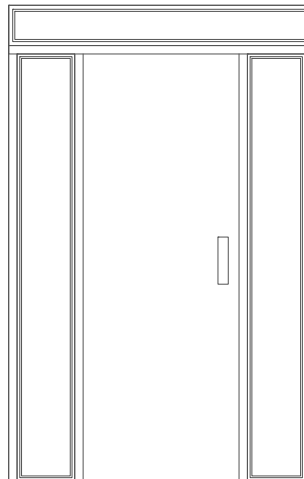


Paired 1-over-1  
Double  
Hung



1-over-1  
Double  
Hung

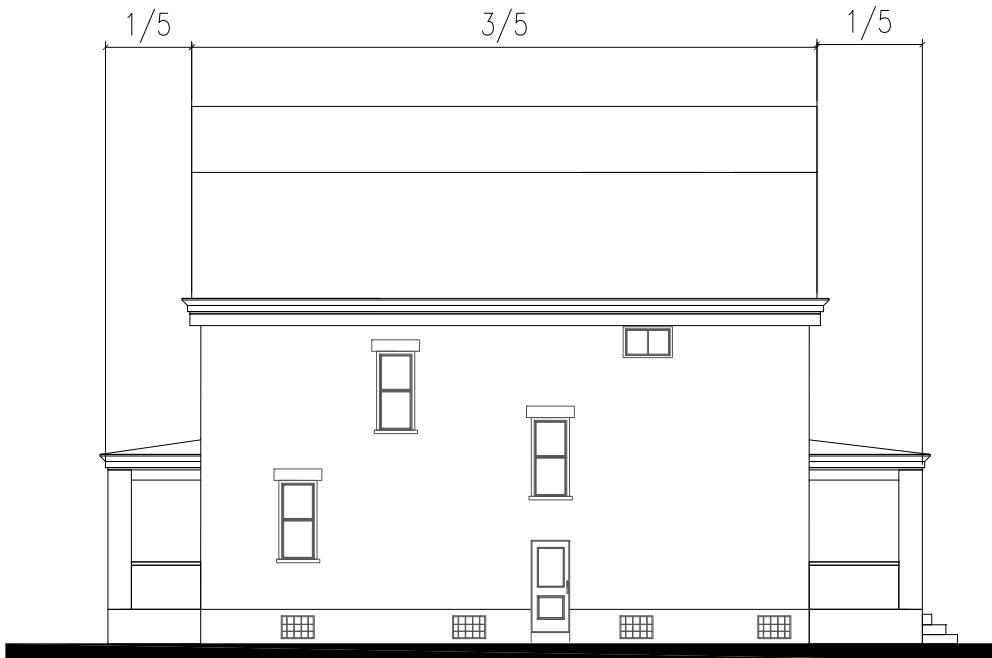
## Common Door



Glass Door + Transom  
with Sidelight

# Building Composition:

Dutch Colonial Revival 3

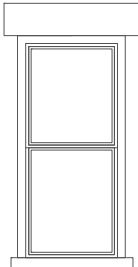


# Windows & Doors:

## Common Windows



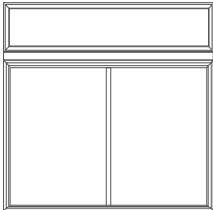
Grouped 1-over-1  
Double  
Hung



1-over-1  
Double  
Hung

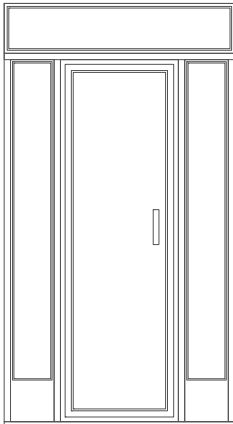


Horizontal  
Slider

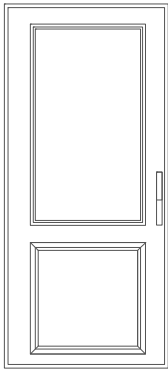


Fixed  
+ Horizontal  
Slider

## Common Door

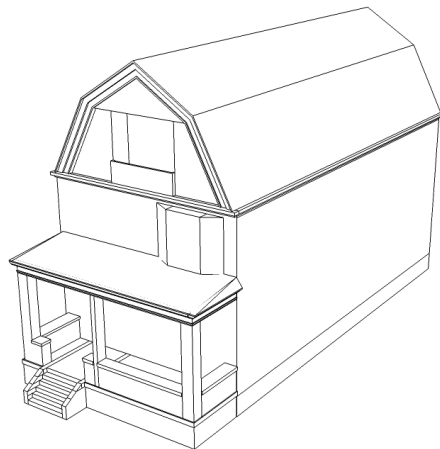
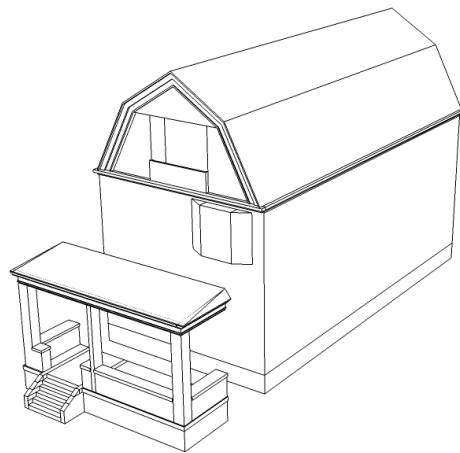
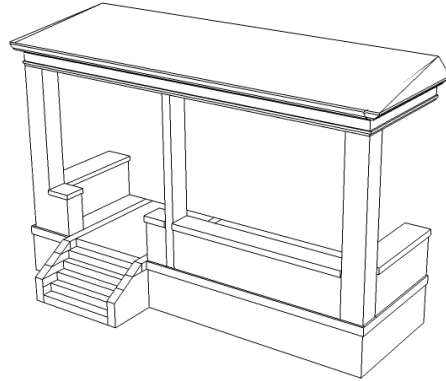


Glass Door with  
Transom + Sidelight



Half Glass Door  
with 1 panel

# Massing:



# Materiality:

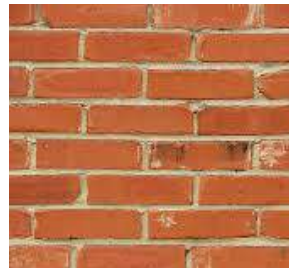
## Most Common in Neighborhood



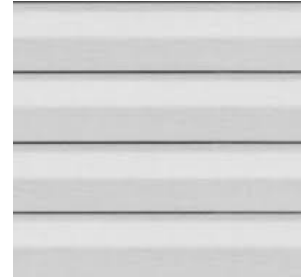
Shingle  
(Exterior)



Stone  
(Exterior)



Red Brick  
(Exterior)

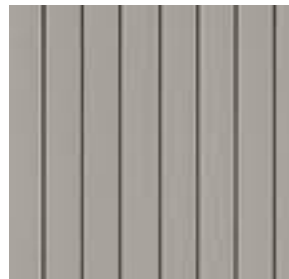


White Vinyl  
(Exterior)

## Alternative



Stucco  
(Exterior)



Vertical Vinyl  
(Exterior)



